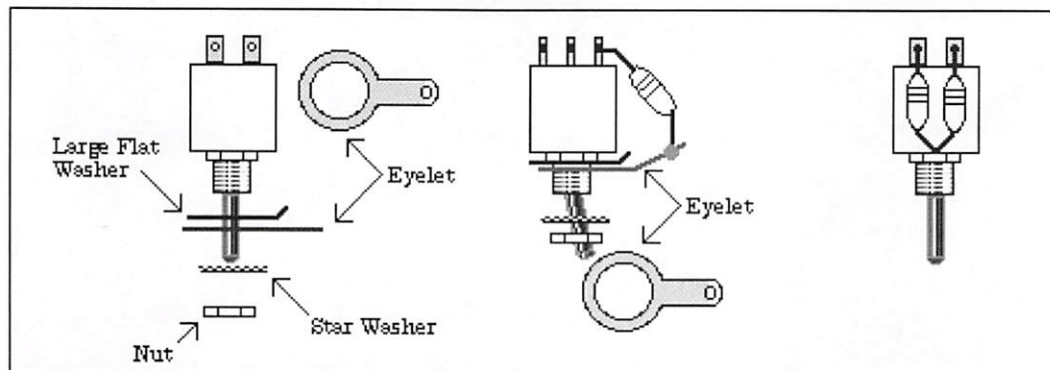


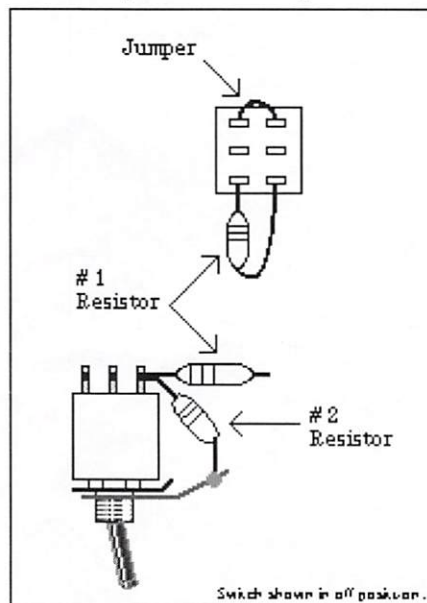
Fox Hunt Attenuator



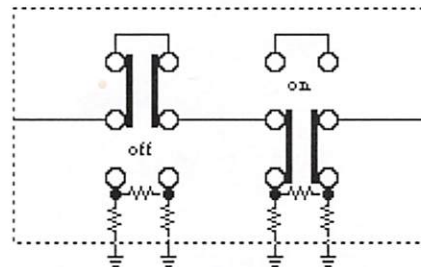
Study the all the drawings. This should give you all the information you need to assemble the Fox Hunt Attenuator.

Solder 3 resistors to each switch as shown.

1 resistor #1 and 2 resistors #2 to each of the 5 switches, before installing them into the box.



Pi-Network Resistive Attenuator



5 dB

#1 Resistor 33 ohm Orange - Orange - Black
#2 Resistors 200 ohm Red - Black - Brown

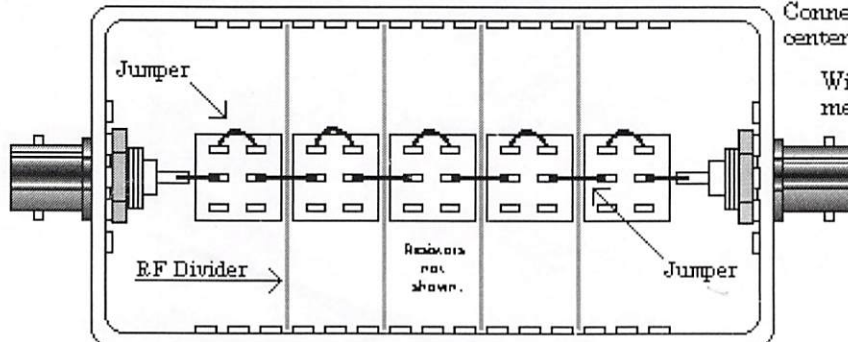
10 dB

#1 Resistor 75 ohm Violet - Green - Black
#2 Resistors 100 ohm Brown - Black - Brown

20 dB

#1 Resistor 270 ohm Red - Violet - Brown
#2 Resistors 68 ohm Blue - Gray - Black

After installing the switches and connectors, then solder the copper wire to the connectors and the center contacts on all the switches. After soldering cut out the copper wire between the two contacts of each switch. As Shown below. Be sure to install the RF Dividers between each switch.



Bottom View

Testing Completed Unit

Connect Ohm Meter between the center conductor of each connector.

With all switches off, meter should show 0 - 3 ohms.

Turn each switch on, one at a time. Check reading.

20 dB = 92 ± 3 ohms
10 dB = 55 ± 3 ohms
5 dB = 32 ± 3 ohms